

# Darwin Initiative: Half Year Report

(due 31 October 2008)

|                                 |  |
|---------------------------------|--|
| <b>Project Ref. No.</b>         | 15-026   |
| <b>Project Title</b>            | Bornean Wild Cat and Clouded Leopard Project   |
| <b>Country(ies)</b>             | Malaysia   |
| <b>UK Organisation</b>          | Global Canopy Programme  |
| <b>Collaborator(s)</b>          | Dr Abdul Hamid , New Director of the ITBC and Dr Henry Bernard, Universiti Malaysia, Sabah   |
| <b>Project Leader</b>           | Katherine Secoy  |
| <b>Report date</b>              | 31/10/2007   |
| <b>Report No. (HYR 1/2/3/4)</b> | HYR 3  |
| <b>Project website</b>          | Dedicated pages on GCP website <a href="http://www.globalcanopy.org">www.globalcanopy.org</a><br>Project blog: <a href="http://borneanwildcat.blogspot.com/">http://borneanwildcat.blogspot.com/</a> |

## 1. Outline progress over the last 6 months (April – September) against the agreed baseline timetable for the project (if your project has started less than 6 months ago, please report on the period since start up).

**Camera trapping:** Camera trapping based field work is moving forward as planned. Our project partners, WildCRU have provided co-funding which has allowed us to purchase additional camera traps enabling a more robust design for current and future surveys, as a larger area can be covered with cameras. We are currently conducting a capture-mark-recapture survey for clouded leopards within a very recently logged area of the Ulu Segama-Malua Forest Reserve where we have recently obtained photo-captures of clouded leopards and also leopard cats. Capture probability for clouded leopards in the primary forest, proved to be too low to allow a capture-mark-recapture based density estimate, however relative abundance data on felids and other species based on photo capture rates has been obtained. See appendix I for new images from Camera traps.

During April 2008 we obtained our first photograph of a flat-headed cat. This is the first time this species has been photographed within the Ulu Segama-Malua Forest Reserve and this forest reserve is now the only area of contiguous forest on Borneo where there is definitive evidence of the existence of the entire Bornean felid guild. Camera trapping has also revealed the presence of the critically endangered Sumatran rhinoceros deep in the Conservation Area, the second ever camera trap photo of this species on Borneo, and the endangered banteng in the recently logged area of the forest reserve.

A preliminary sign survey in the adjacent oil palm plantation has suggested that this area will be suitable for a camera survey and may prove to be an appropriate alternative to the plantations surrounding Tabin Wildlife Reserve. We hope to obtain permission to work here within the next two months.

**Live trapping:** The live trapping programme was temporarily suspended in June 2008. Under the regulations of the wildlife department we are only able to operate live traps when there is a vet on site and therefore traps were closed when our project vet had to return to the UK. During the live trapping phase we were successful in trapping and radio collaring six leopard cats in addition to the clouded leopard collared in January. Tracking these cats is challenging, yet possible and we are obtaining data on spatial ecology and habitat use. We plan to re-open the live traps in November 2008 and the recruitment of a new project vet is underway. Data from the radio tracking and camera trapping programmes will form the basis of the recommendation report at the conclusion of the project.

**Educational materials:** Bilingual education boards depicting each of the cat species and detailing basic biological and ecological information are now on display at Danum Valley Field Centre, Borneo Rainforest Lodge and Tabin Wildlife Resort and Lok Kawi Wildlife Park in Kota Kinabalu. Work is continuing to produce more specific education boards for each species. Karen Povey, Director of the Clouded Leopard Project, based at Point Defiance Zoo and Aquarium, Tacoma, USA visited our project in late August to discuss moving forward with the collaboration of environmental education materials. The Clouded Leopard Project has produced an illustrated educational story book in English and Thai which depicts the life of a Thai biologist studying the ecology of clouded leopards (see appendix II). We are now working with the Clouded Leopard Project to produce a Malaysian version, and our collaborator, Dr. Henry Bernard at the ITBC is extremely keen to do the translation and we are working with him to identify schools and clubs as the target audience. Currently, we are planning an initial print run of 5000 copies and are working towards raising some co-funding to finance these in addition to the \$3,600 from Point Defiance Zoo which has been raised towards the publication. We are also still looking for additional funds in the region of £5,000

to develop the cartoon boards.

**Training course:** The third and fourth training courses unfortunately had to be cancelled due to a break down of the generator at Danum Valley Field Centre which left the centre completely without electricity or running water during the same period of time the course had been scheduled. The next course is set for the 24<sup>th</sup>-30<sup>th</sup> November; 15 students are already signed up and lectures and associated materials written and printed (see appendix III for participant list). The course will follow the same format as previously, however, our trainee counterpart Daniel Pamin will take a stronger role and will teach the camera trapping and conservation genetics sections in addition to having a strong teaching role during the practical sessions. The fourth course will run early in the new year, followed by the fifth and sixth courses later in the year. This will bring the total number of trained Malaysian students and scientists to 93. In addition, we are planning to take on two or three final year conservation biology undergraduates to complete their research projects under the auspices of our project.

**Awareness survey:** We are now working closely with a social scientist from Oxford University, Dr. Maggie Redshaw, who is very experienced in the design and implementation of questionnaire surveys. Dr. Redshaw will guide the design of our questionnaire and will read drafts before they are finalised. During a meeting with Dr. Redshaw in August we agreed that the most appropriate format to the questionnaire is to have it centred on the communities' use of forests and forest products in general, of which hunting will be an element. Dr Redshaw has provided advice on how to address the question of hunting, by, for example, asking if a particular person is aware of anyone hunting wildlife, as opposed to asking them directly if they hunt wildlife. We have also sought the advice of a former colleague Dr. Sunny Sanderson who is currently implementing questionnaire surveys in the Malaysian state of Sarawak; although the demography is different in Sarawak several principals concerning these types of surveys will remain constant.

**2. Give details of any notable problems or unexpected developments that the project has encountered over the last 6 months. Explain what impact these could have on the project and whether the changes will affect the budget and timetable of project activities.**

There have been two problems regarding hosting the Mammal Research Techniques field course at Danum Valley. The first was concerning a double booking for accommodation and finding student availability in the teaching term and the second was the failure of the generator which resulted in a lack of running water and electricity. For practical and safety reasons it was decided to postpone the field course. Although the courses will now run in the next financial year to that previously planned there are no budgetary implications as all expenses were paid in advance during the last financial year and are on standby. The only problem that may arise is identifying sufficient numbers of students in the final year to fill the remaining three courses. We will be offering the course to a wider number of applicants to reduce the likelihood of this occurring.

**Have any of these issues been discussed with the Darwin Secretariat and if so, have changes been made to the original agreement?** No – there has only been a scheduling alteration.

**Discussed with the DI Secretariat:**  no/yes, ..... (month/yr)

**Changes to the project schedule/workplan:**  no/yes,.....(month/yr)

**3. Are there any other issues you wish to raise relating to the project or to Darwin's management, monitoring, or financial procedures?**

During the last six months the project has been promoted through an interview on Mongabay.com (appendix IV) where the Darwin Initiative was mentioned as the primary funding body for the project. We are also working more closely with WildCRU to develop the future of the project beyond the Darwin Initiative funded phase and to devise a second stage enquiry building on the scientific foundation achieved to date.

We are also working closely with Dr. Jim Sanderson on a very new initiative to develop a long-term research and conservation centre in Sabah, specifically based around the felid guild. It is very early days for this initiative, but it is likely that it will be based in an area where there is currently inadequate protection from hunting and where involvement from local communities can be high. More details should be available in the next report.

**If you were asked to provide a response to this year's annual report review with your next half year report, please attach your response to this document.**

**Please note: Any planned modifications to your project schedule/workplan or budget should not be discussed in this report but raised with the Darwin Secretariat directly.**

Please send your **completed form email** to Eilidh Young, Darwin Initiative M&E Programme at [Darwin-Projects@ectf-ed.org.uk](mailto:Darwin-Projects@ectf-ed.org.uk). The report should be between 1-2 pages maximum. **Please state your project reference number in the header of your email message eg Subject: 14-075 Darwin Half Year Report**

Appendix I

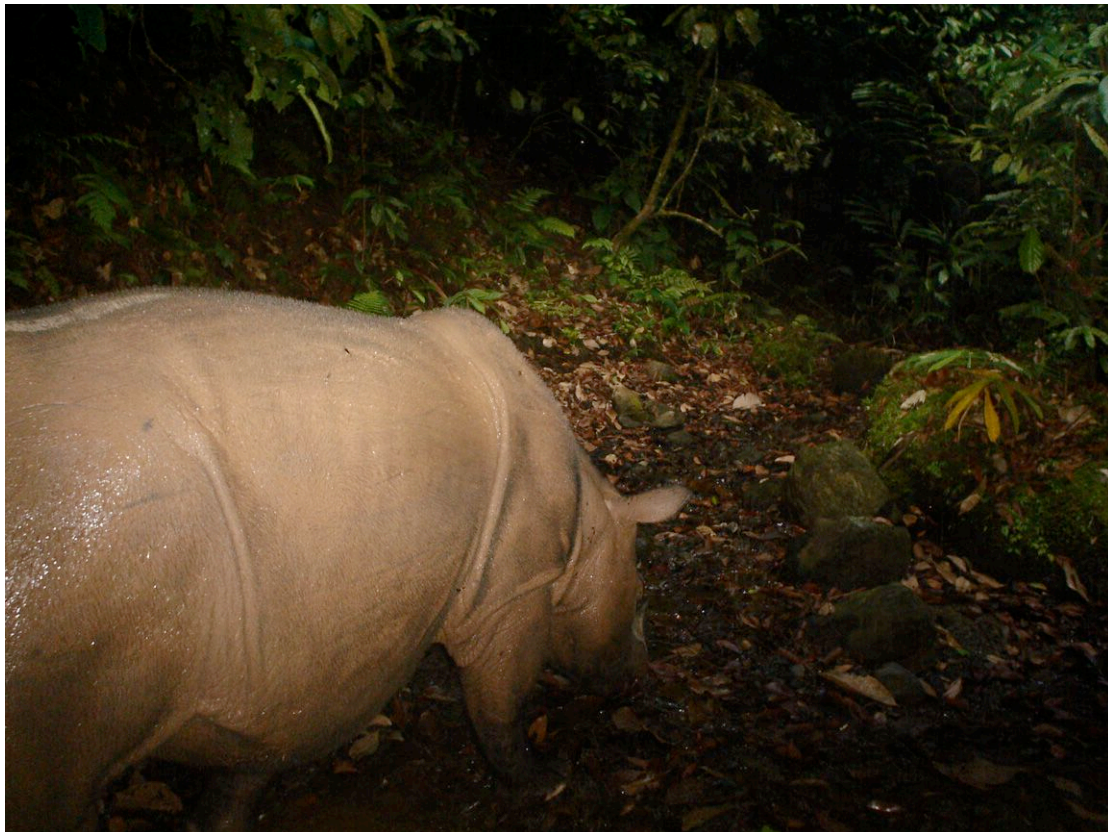
Examples of recent camera trap photographs



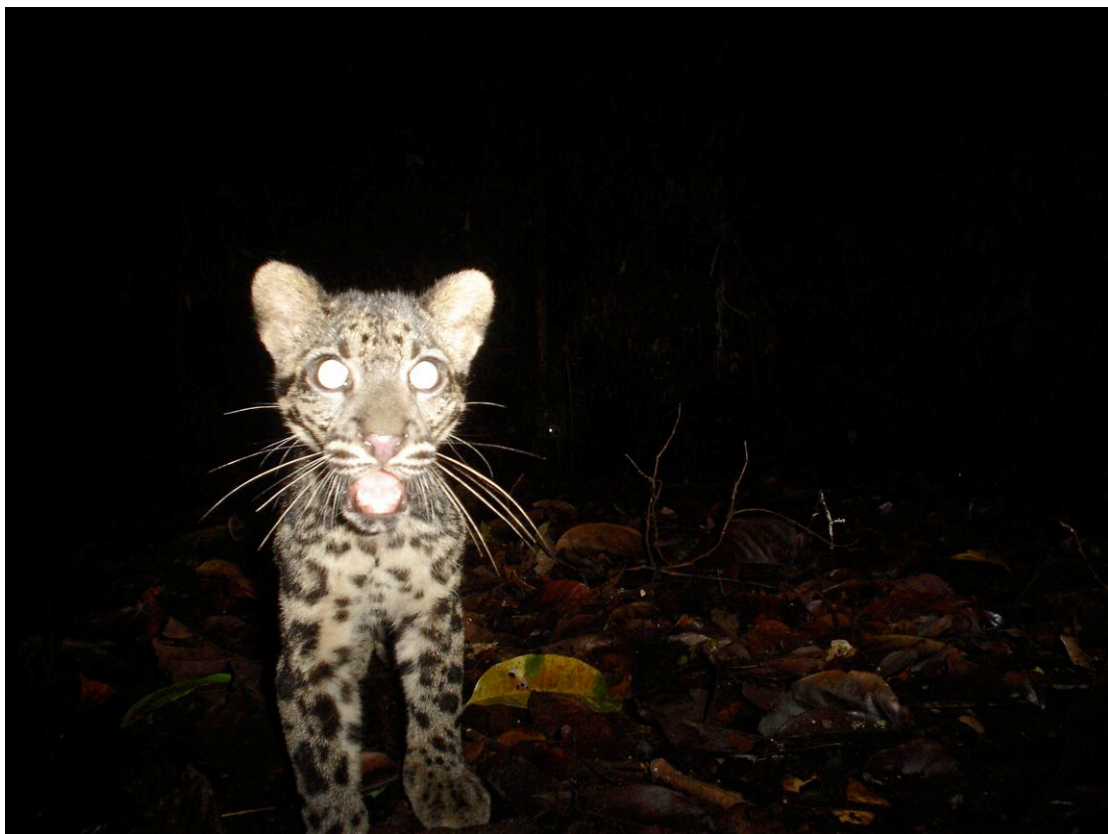
Greater mouse deer recorded from the Conservation Area



Lesser mouse deer recorded from the conservation area



An extremely rare image of the Sumatran rhinoceros recorded deep in the Conservation Area. It is estimated that there are less than 10 individuals remaining in this area.



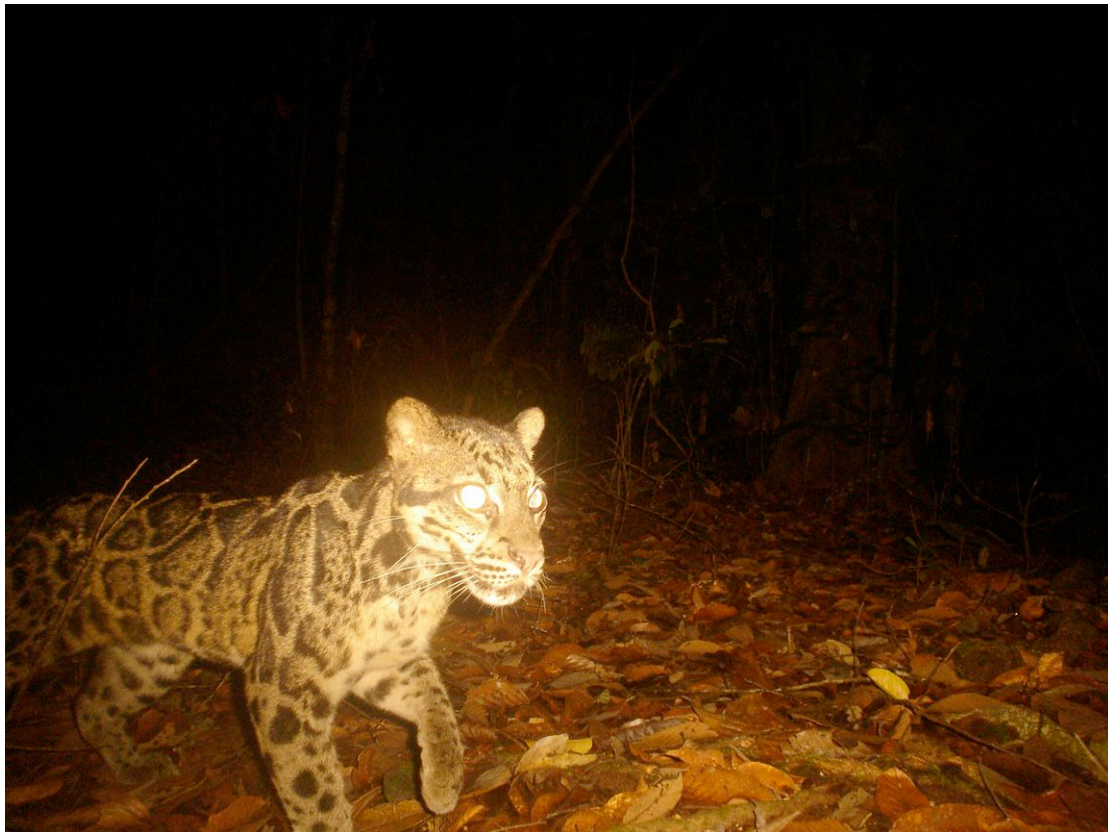
A juvenile clouded leopard recorded from the Conservation Area



A male bay cat photo-captured in the Conservation Area



A male blue headed pitta photographed in the Conservation Area



A clouded leopard photographed in the Conservation Area



A sun bear photo-captured in the Conservation Area



The first clouded leopard photo-captured in the Malua area of logged forest



A female banteng photographed in the Malua logged forest



Male banteng photo-captured in the logged forest of the Malua Forest Reserve



A leopard cat photographed in Malua





Male orang utan photo-captured along an old logging road in Malua Forest Reserve



Two otter civets photo-captured in the recently logged Malua Forest Reserve



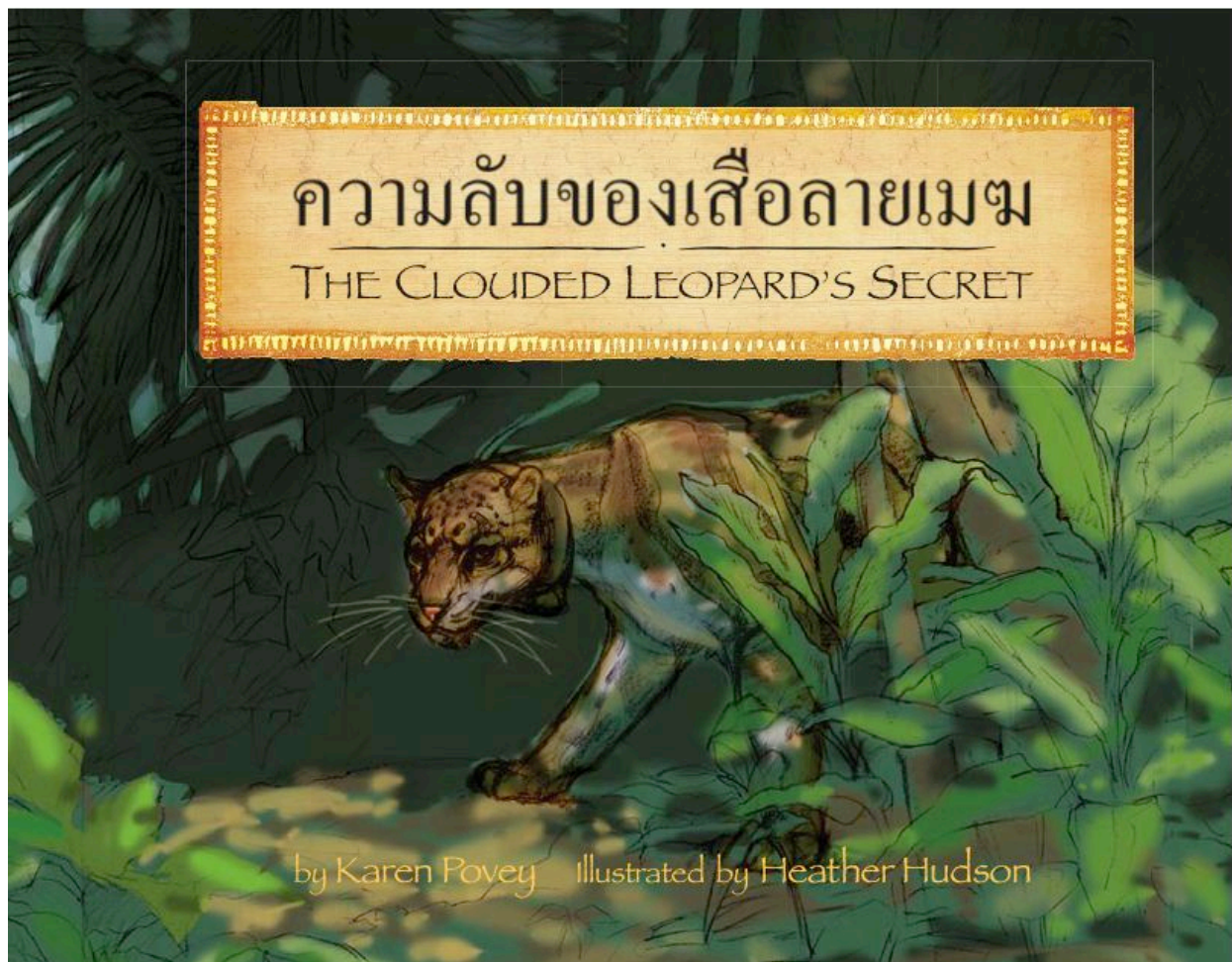
Pig tailed macaques photographed on an old logging road within the Malua Forest Reserve



Yellow-throated marten photo-captured in the Malua Forest Reserve

**Appendix II**

See Attached File entitled '15/026 The Clouded Leopard's Secret – mock up' - for the Thailand version of the book



## Appendix III

### **List of attendees for the third Mammal Field Research Techniques Training Course**

1. Leong Suet Yin
2. Lee Siew Mei
3. Hia Pei Gyn
4. Chia Pei Ching
5. Ong Jiat Bing
6. Loh Pei Vent
7. Cassandra. V. Sikayun
8. Audrey Jane Kual
9. Josephina Fina ak Doam
10. Cornelia Said
11. Thomas Voo Chung Hew
12. Chua Mun Seng
13. Ting Suok Ming
14. Chua Ling Li
15. Xi Yue

## **Appendix IV**

See attached file entitled "15/026 Mongabay Interview"